

REV.	DESCRIPTION	DATE	DRAFTER	APPROVER
A1	DWG.REL	2020.05.22	DENG	JIN

- Material
 ①Screws : M3.0 steel, Zinc plated,
 “-” slot type
 ②Housing : PA66, UL94V-0
 ③Clamp : Copper alloy, Ni plated
 ④Pin header : Copper alloy, Tin plated

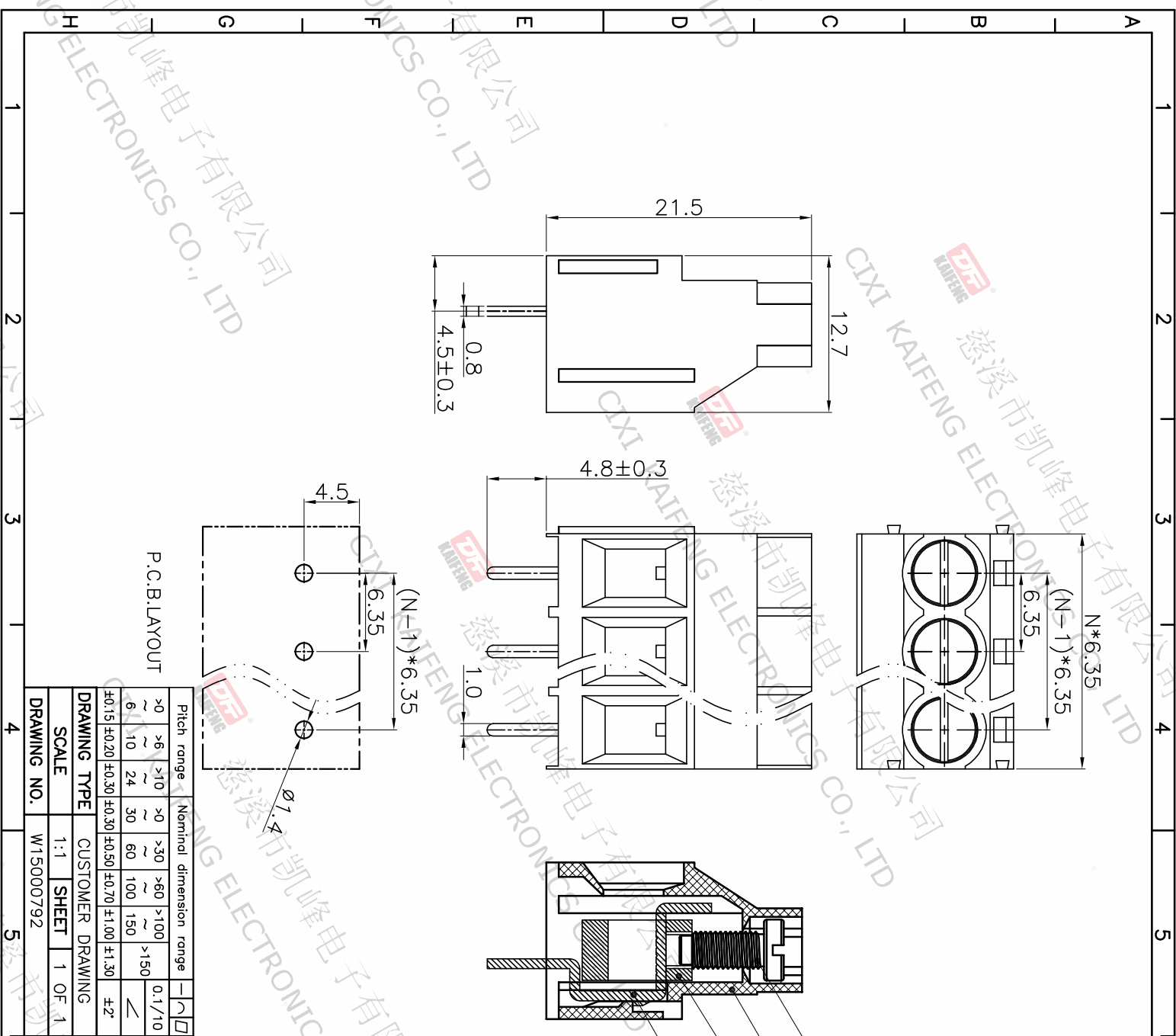
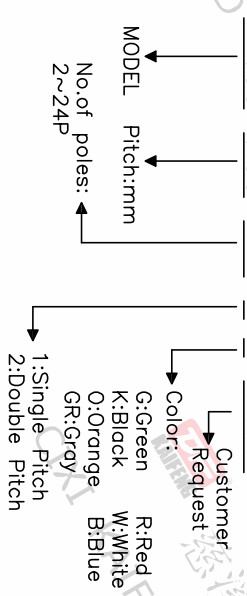
- Electrical
 UL IEC
 Rated voltage : 300V 450V
 Rated current : 30A 41A
 Contact Resistance: 20mΩ
 Insulation resistance: 500MΩ/DC500V
 Withstanding Voltage : AC3000V/1min
 Wire range: 26-10AWG 6.0mm²

- Mechanical
 Operating temperature: -40°C ~ +105°C
 Soldering temperature: 250°C ± 5 / 5sec
 Torque: 0.5N.m (4.43Lb.in)
 Strip length: 6-7mm

• RoHS compliance

HOW TO ORDER

KF635-6.35-XXP-1 X-XXXXX



Pitch range	Nominal dimension range	PROJECTION	UNIT
>0	>0	0.1/10	mm
~6	~30		
~10	~60		
~24	~100		
~30	~150		
±0.15	±0.30		
±0.20	±0.50		
±0.30	±0.70		
	±1.00		
	±1.30		
	±2°		

DF 慈溪市凯峰电子有限公司
 CIXI KAIFENG ELECTRONICS CO.,LTD

TITLE: KF635-6.35-XXP-1X
 SHEET SIZE: A4
 SERIES: KF635

DRAWING TYPE: CUSTOMER DRAWING
 SCALE: 1:1
 SHEET: 1 OF 1
 DRAWING NO.: W15000792

CIXI KAIFENG ELECTRONICS CO., LTD
 慈溪市凯峰电子有限公司

CIXI KAIFENG ELECTRONICS CO., LTD
 慈溪市凯峰电子有限公司

CIXI KAIFENG ELECTRONICS CO., LTD
 慈溪市凯峰电子有限公司