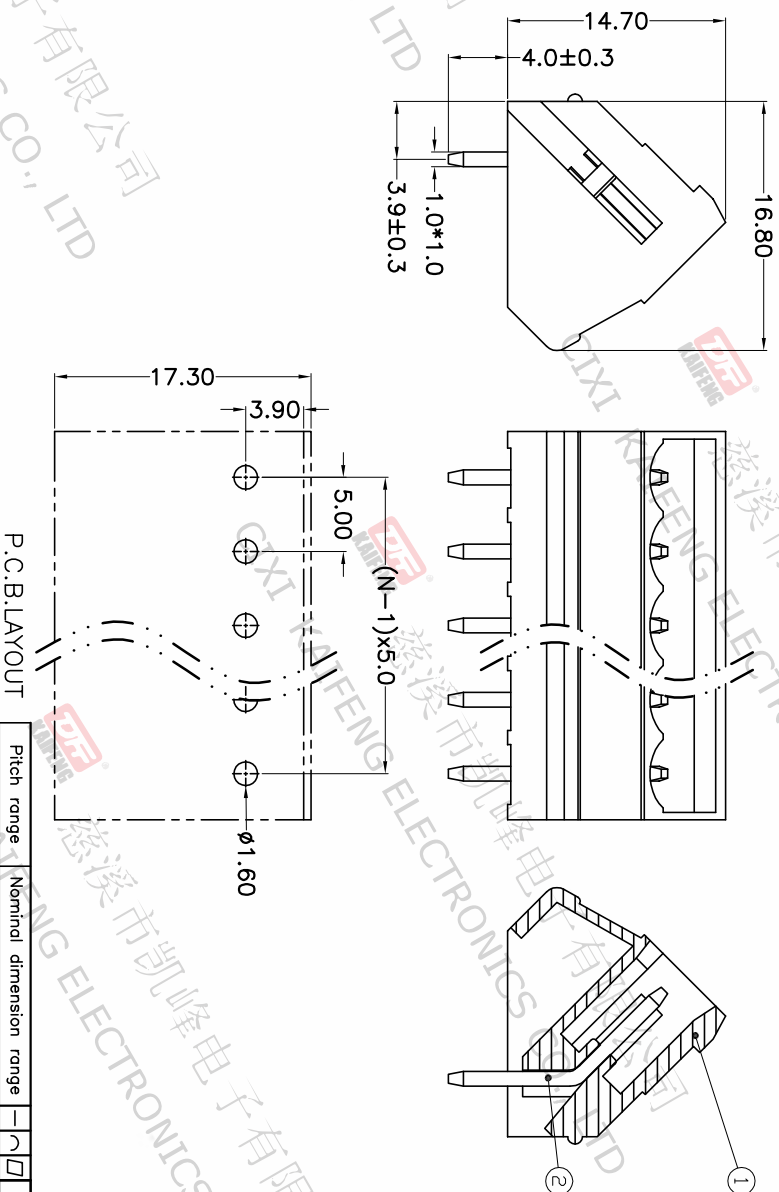


REV.	DESCRIPTION	DATE	DRAFTER	APPROVER
A1	DWG.REL	2020.5.30	ZHANG	JIN

- Material
 @Housing : PA66, UL94V-0
 @Pin header : Copper alloy, Tin plated
- Electrical
 UL IEC
 Rated voltage : 300V 320V
 Rated current : 15A 20A
 Contact resistance : 20mΩ(Max)
 Insulation resistance: 500MΩ/DC500V
 Withstanding Voltage : AC2000V/1min
- Mechanical
 Operating temperature: -40°C~+105°C
 Soldering temperature:250°C±5/5sec
- RoHS compliance



Pitch range	Nominal dimension range	
>0	>0	0.1/10
~6	~30	≤
~10	~60	±2'
~24	~100	
~30	~150	
±0.15	±0.30	
±0.20	±0.50	
±0.30	±0.70	
	±1.00	
	±1.30	

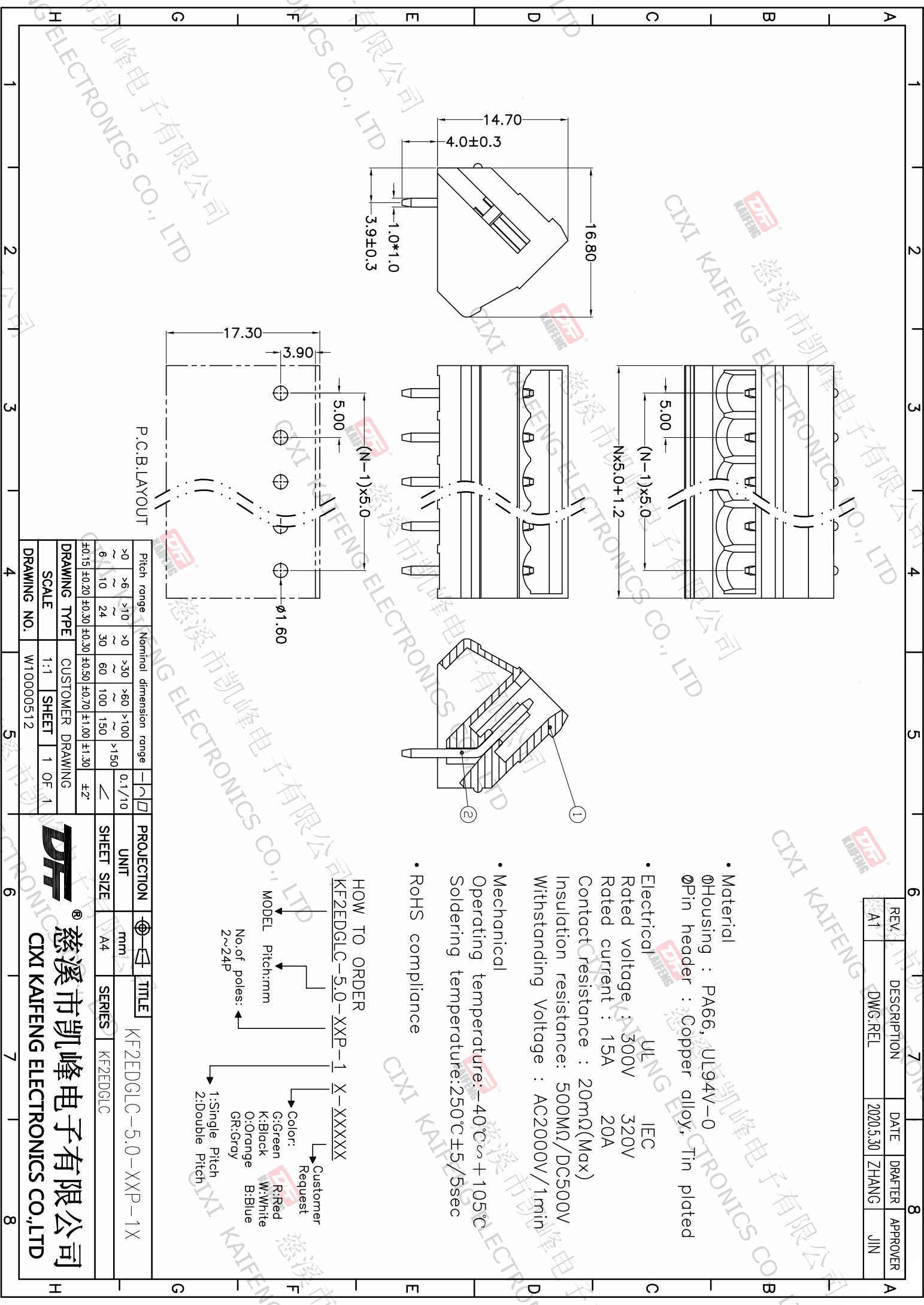
DRAWING TYPE	CUSTOMER DRAWING	PROJECTION	UNIT	TITLE
SCALE	1:1	SHEET	1 OF 1	KF2EDGLC-5.0-XXP-1X
DRAWING NO.	W10000512	SHEET SIZE	A4	SERIES
				KF2EDGLC

HOW TO ORDER
 KF2EDGLC-5.0-XXP-1 X-XXXXX

MODEL Pitch:mm
 No.of poles:
 2~24P

Color:
 G:Green R:Red
 K:Black W:White
 O:Orange B:Blue
 GR:Gray

Customer Request
 1:Single Pitch
 2:Double Pitch



慈溪市凯峰电子有限公司
 CIXI KAIFENG ELECTRONICS CO., LTD

DFE
 慈溪市凯峰电子有限公司
 CIXI KAIFENG ELECTRONICS CO.,LTD