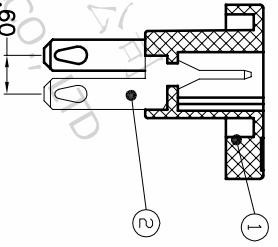
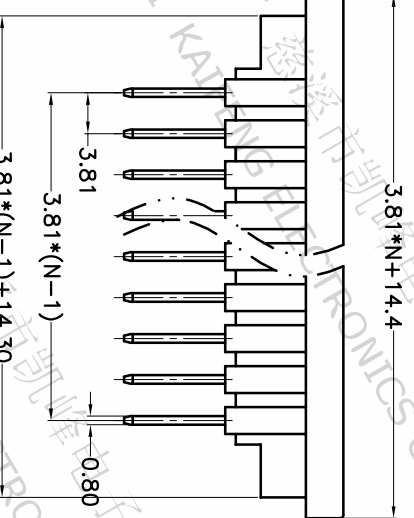
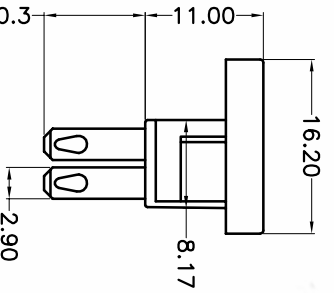
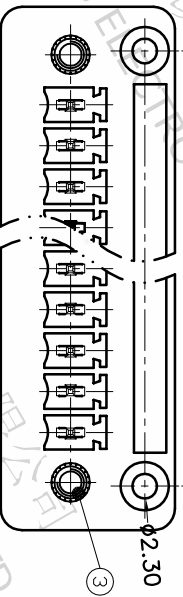


REV.	DESCRIPTION	DATE	DRAFTER	APPROVER
A1	DWG.REL	2020.5.20	ZHANG	JIN



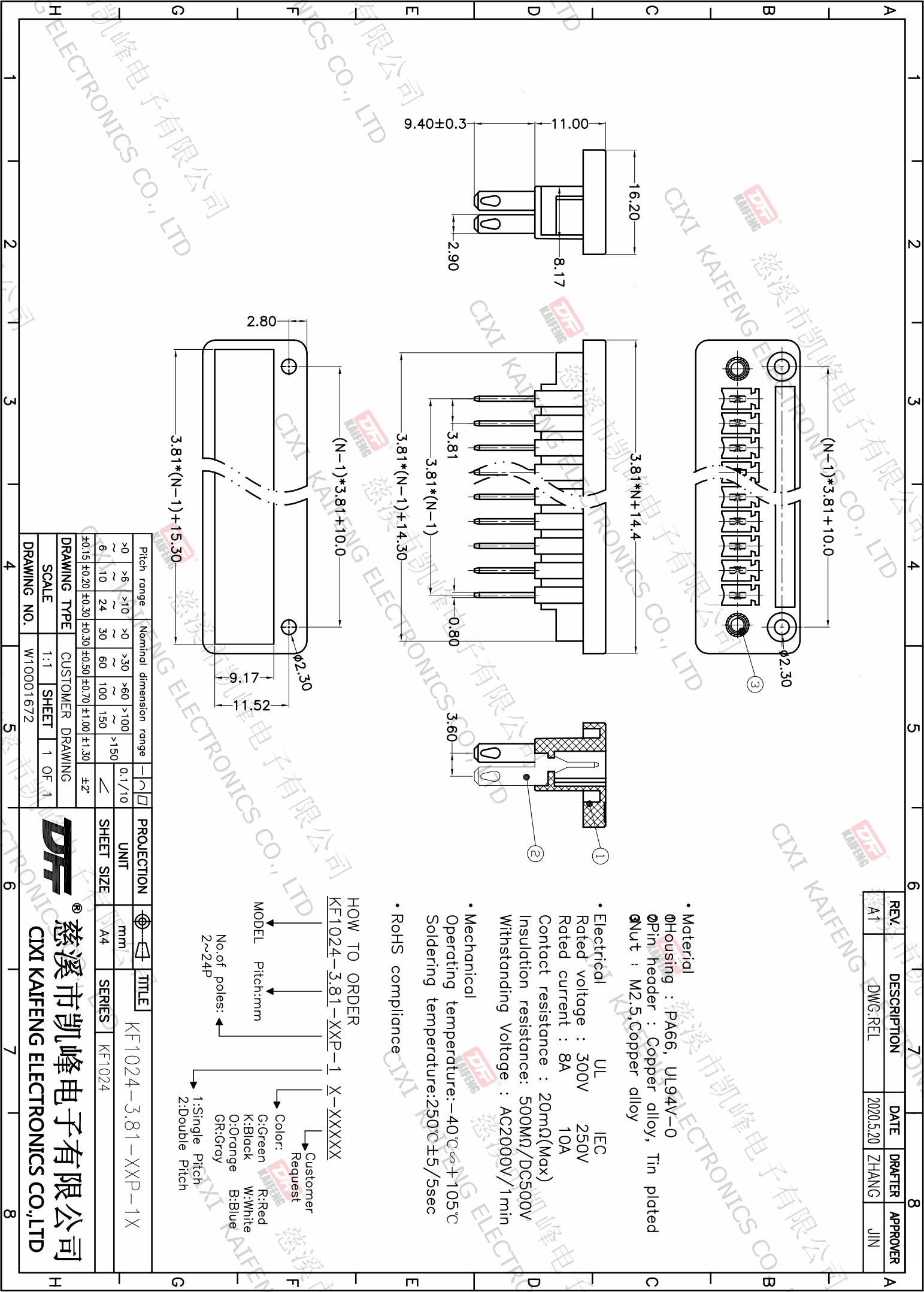
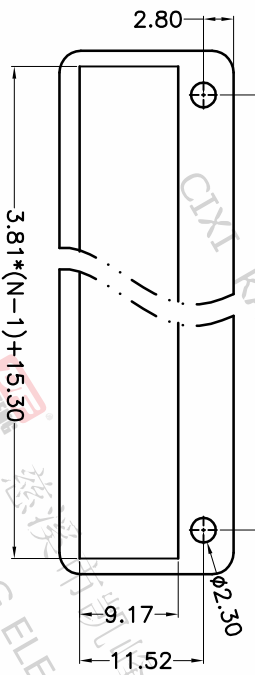
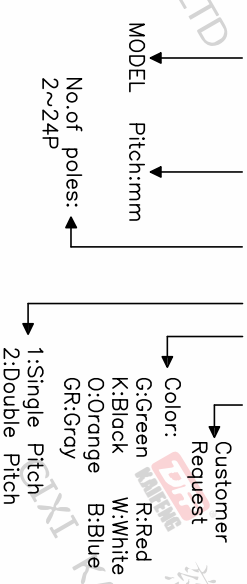
- Material  
 @Housing : PA66, UL94V-0  
 @Pin header : Copper alloy, Tin plated  
 @Cut : M2.5,Copper alloy

- Electrical  
 Rated voltage : 300V 250V  
 Rated current : 8A 10A  
 Contact resistance : 20mΩ(Max)  
 Insulation resistance: 500MΩ/DC500V  
 Withstanding Voltage : AC2000V/1min

- Mechanical  
 Operating temperature: -40°C~+105°C  
 Soldering temperature:250°C±5/5sec

• RoHS compliance

HOW TO ORDER  
 KF1024-3.81-XXP-1 X-XXXXX



Pitch range	Nominal dimension range	Projection	Unit
>0	>0	0.1/10	mm
~6	~10		
~10	~24		
~30	~60		
~100	~150		
~150	~300		
±2°			

DRAWING TYPE	CUSTOMER DRAWING
SCALE	1:1
DRAWING NO.	W10001672

PROJECTION	TITLE
UNIT	KF1024-3.81-XXP-1X
SHEET SIZE	A4
SERIES	KF1024

**DF** 慈溪市凯峰电子有限公司  
 CIXI KAIFENG ELECTRONICS CO.,LTD